



FITTING INSTRUCTIONS FOR ECS0149
ENGINE CASE SLIDER
DUCATI PANIGALE 2018- V4R & 2019- V4R
RHS DUCATI DRY CLUTCH COVER ENGINE CASE SLIDER
(ALSO APPLICABLE TO 2020- V4 & V4S WITH DUCATI DRY CLUTCH OPTION.)



THIS KIT CONTAINS THE ITEMS PICTURED AND LABELLED OVER PAGE.

SOME PARTS MAY BE SHOWN FOR CLARITY OF INSTRUCTIONS ONLY.

DO NOT PROCEED UNTIL YOU ARE SURE ALL PARTS ARE PRESENT.

PLEASE READ ALL INSTRUCTIONS BEFORE PROCEEDING.

**IF IN ANY DOUBT WHEN FITTING OUR PRODUCTS, CONSULT ONE OF OUR DEALERS
OR HAVE FITTED BY A QUALIFIED TECHNICIAN.**

PLEASE NOTE THAT THE WAY THE KIT IS PACKED DOES NOT NECESSARILY REPRESENT THE WAY OF
MOUNTING TO THE BIKE.

IN THE EVENT OF RUBBER WASHERS BEING USED TO HOLD COMPONENTS ONTO BOLTS,
THESE RUBBER WASHERS CAN BE THROWN AWAY.

DIGITAL COPIES OF THESE INSTRUCTIONS ARE AVAILABLE FROM:

WWW.RG-RACING.COM

R&G Racing

Unit 1, Shelley's Lane, East Worldham, Alton, Hampshire, GU34 3AQ

Tel: +44 (0)1420 89007 Fax: +44 (0)1420 87301 www.rg-racing.com Email: info@rg-racing.com



<u>TOOLS REQUIRED</u>	<u>GENERAL TORQUE SETTINGS</u>
<ul style="list-style-type: none"> • Socket set to include 10mm A/F socket and wrench. • Hex Key set to include 3, 4 & 5 mm 	M4 BOLT = 8Nm M5 BOLT = 12Nm M6 BOLT = 15Nm M8 BOLT = 20Nm M10 BOLT = 40Nm M12 BOLT = 40Nm

LEGEND

ITEM NO.	DESCRIPTION	QTY
ITEM 1	ECS0149	1
ITEM 2	M6 WASHER	3
ITEM 3	M6 x 30mm BUTTON HEAD BOLT	2
ITEM 4	M6 x 35mm BUTTON HEAD BOLT	1
ITEM 5	S1281 – 5MM SPACER	1

ASSEMBLY DIAGRAM



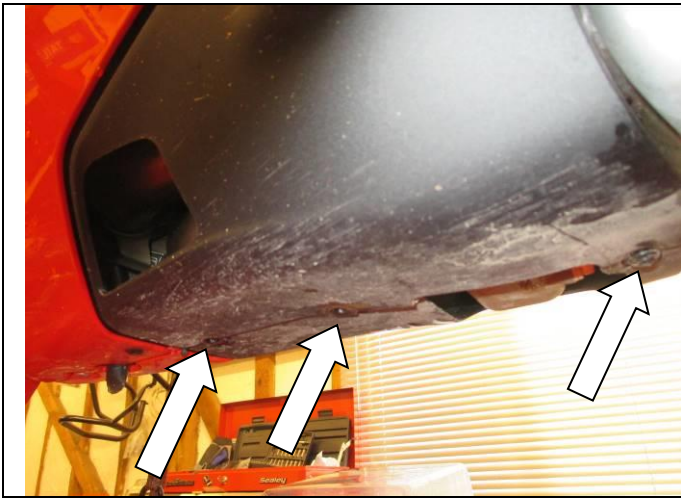
R&G Racing

Unit 1, Shelley's Lane, East Worldham, Alton, Hampshire, GU34 3AQ

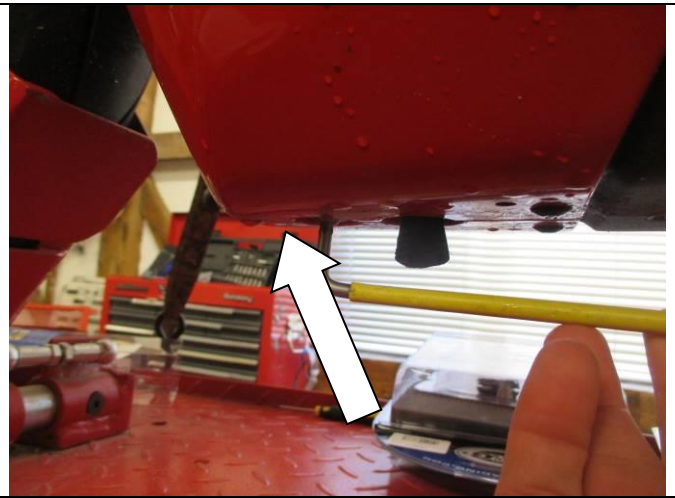
Tel: +44 (0)1420 89007 Fax: +44 (0)1420 87301 www.rg-racing.com Email: info@rg-racing.com



Fitting Pictures



Picture 1



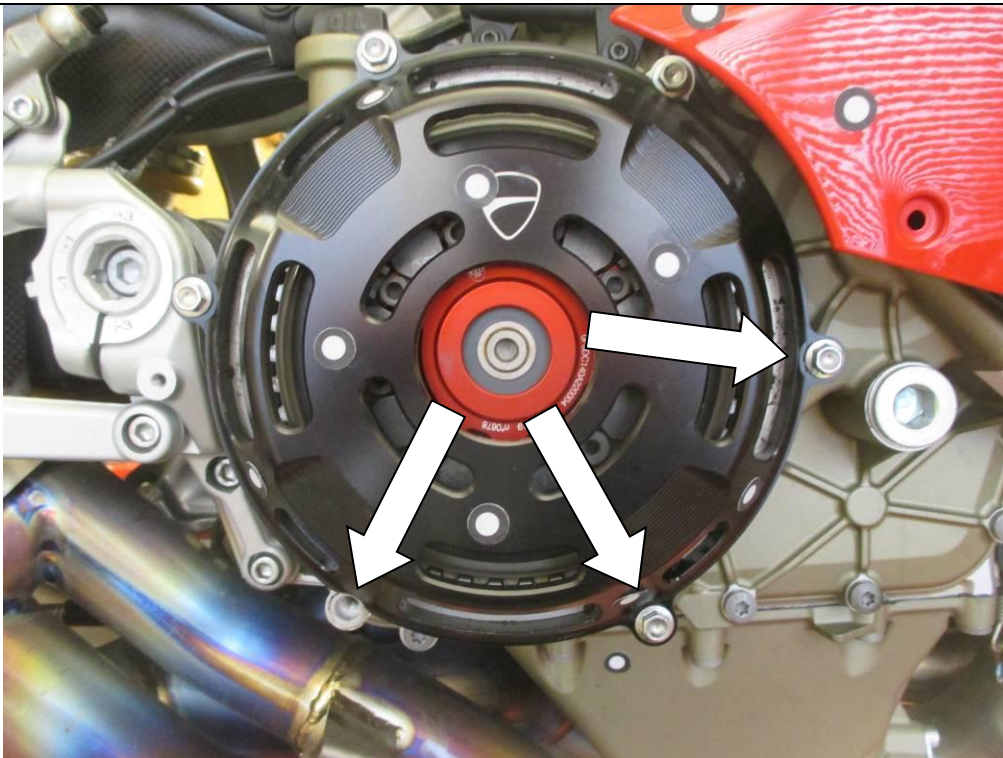
Picture 2



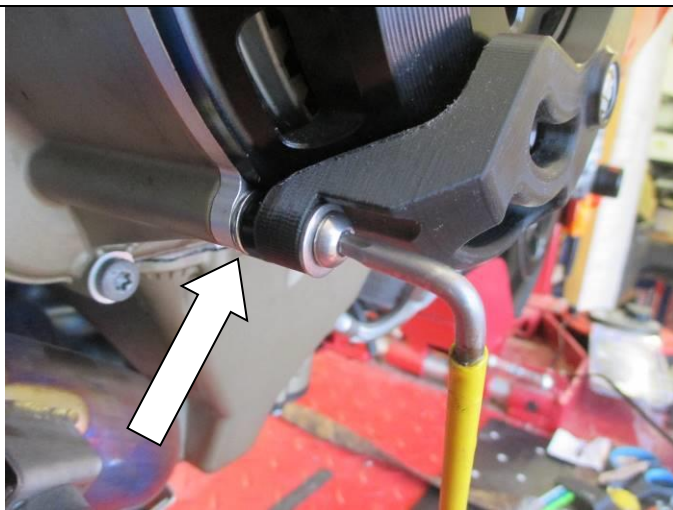
Picture 3



Picture 4



Picture 5



Picture 6



Picture 7



FITTING INSTRUCTIONS

- To access the engine case mount bolts, remove the lower RHS belly panel from the bike:
 - Remove the 3 x 3mm allen bolts from the underside of the belly pan as shown in **picture 1**.
 - Remove the forward 4mm allen bolt from the underside of the belly pan as shown in **picture 2**.
 - Remove the 4mm allen bolt from the rear of the belly panel found near the rear brake lever as shown in **picture 3**.
 - While supporting the belly fairing, remove the 3 x 3mm allen bolts connecting to the upper fairing as shown in **picture 4**.
 - Note the position of the rubber grommet secured between the belly panels, this will need to be replaced when re-attaching the belly panel.
- You can now access the 3 engine bolts that need to be removed as arrowed in **picture 5**, Remove these using an 8mm socket.
- Offer the engine case slider up to the bike in the correct orientation.
- Referring to the **Assembly diagram** on page 2:
 - Place one M6 washer (item 2) over each of the bolts.
 - Place the longer M6 x 35mm bolt (item 4) into the rearmost hole of the engine case slider (item 1).
 - Place the 5mm spacer (item 5) over the thread of the M6 X 35mm rear bolt.
 - Thread the shorter M6 x 30mm bolts (Item 3) into the two remaining holes.
- Offer the assembly up to the engine case and secure the slider to the bike, ensuring the spacer sits against the rearward mount as shown in **picture 6**.
- Tighten all bolts to the correct torque using a 4mm hex key.
- When re-fitting the fairing ensure the rubber grommet in the belly pan is placed correctly between the two fairing pieces as shown in **picture 7**.
- Check all bolts are tight and fairing is secure before riding.
- Check tightness of bolts regularly.

ISSUE 1 11/09/2020 (DM)

CONSUMER NOTICE

The catalogue description and any exhibition of samples are only broad indications of the Products and R&G may make design changes which do not diminish their performance or visual appeal and supplying them in such state shall conform to the order. The Buyer acknowledges no representation or warranty (other than as to title) has been given or will apply to the Products other than those in R&G's order or confirmation and the Buyer confirms it has chosen the Products as being of merchantable quality and suitable for its particular purposes. Where R&G fits the Products or undertakes other services it shall exercise reasonable skill and care and rectify any fault free of charge unless the workmanship has been disturbed. The Buyer is responsible for ensuring that the warranty on the motorcycle is not affected by the fitting of the Products. On return of any defective Products R&G shall at its option either supply a replacement or refund the purchase money but shall not be liable if the Products have been modified or used or maintained otherwise than in accordance with R&G's or manufacturer's instructions and good engineering practice or if the defect arises from accident or neglect. Other than identified above and subject to R&G not limiting its liability for causing death and personal injury, it shall not be liable for indirect or consequential loss and otherwise its liability shall be limited to the amounts paid by the Buyer for the Products or the fitting or service concerned. These terms do not affect the Buyer's statutory rights.

R&G RACING RETURNS POLICY (NON-FAULTY GOODS)

Returns must be pre-authorized (if not pre-authorized the return will be rejected). Goods may only be returned direct to us if they were purchased direct from us (customer must prove if necessary). Otherwise to be returned to original vendor. Goods must be in re-sellable condition, in the opinion of R&G Racing. All returns are subject to a 25% restocking and handling fee (25% of the gross value exc. P&P – at the prevailing price at time of purchase). The customer must pay any and all carriage charges. No returns of discontinued products, unless within 14 days of purchase. This policy does not affect your statutory rights and does not refer to faulty goods.

R&G Racing

Unit 1, Shelley's Lane, East Worldham, Alton, Hampshire, GU34 3AQ

Tel: +44 (0)1420 89007 Fax: +44 (0)1420 87301 www.rg-racing.com Email: info@rg-racing.com



NOTICE DE MONTAGE POUR ECS0149
PROTECTION CARTER MOTEUR
DUCATI PANIGALE 2018- V4R & 2019- V4R
PROTECTION EMBRAYAGE A SEC / CARTER MOTEUR CÔTÉ DROIT
(AUSSI APPLIQUABLE À 2020- V4 & V4S AVEC OPTION EMBRAYAGE A SEC DUCATI)



CE KIT CONTIENT LES ARTICLES ILLUSTRÉS ET ÉTIQUETES SUR LA PAGE.

CERTAINES PARTIES PEUVENT ÊTRE PRÉSENTES UNIQUEMENT POUR LA CLARTE DES INSTRUCTIONS.

NE PAS PROCÉDER AU MONTAGE TANT QUE VOUS N'ÊTES PAS SÛR QUE TOUTES LES PIÈCES SOIENT PRÉSENTES.

VEUILLEZ LIRE TOUTES LES INSTRUCTIONS AVANT DE CONTINUER.

EN CAS DE DOUTE LORS DU MONTAGE DE NOS PRODUITS, CONSULTEZ UN DE NOS REVENDEURS OU FAITES APPEL A UN TECHNICIEN QUALIFIÉ.

VEUILLEZ NOTER QUE LA FAÇON DONT LE KIT EST EMBALLÉ NE REPRÉSENTE PAS NECESSAIREMENT LA MANIÈRE DE LE MONTER SUR LA MOTO.

SI DES RONDELLES EN CAOUTCHOUC SONT UTILISÉES POUR MAINTENIR LES COMPOSANTS SUR LES BOULONS, ELLES PEUVENT ÊTRE JETÉES.

NOTICE DISPONIBLE AU TÉLÉCHARGEMENT SUR : WWW.RG-RACING.COM



OUTILS REQUIS	VALEURS DE SERRAGE RECOMMANDÉES
<ul style="list-style-type: none"> Clé à cliquet + douille 10mm. Clé hexagonale 3, 4 & 5 mm 	M4 BOULON = 8Nm M5 BOULON = 12Nm M6 BOULON = 15Nm M8 BOULON = 20Nm M10 BOULON = 40Nm M12 BOULON = 40Nm

LÉGENDE

ARTICLE NO.	DESCRIPTION	QTÉ
ARTICLE 1	ECS0149	1
ARTICLE 2	M6 RONDELLE	3
ARTICLE 3	M6 x 30mm BOULON	2
ARTICLE 4	M6 x 35mm BOULON	1
ARTICLE 5	S1281 - 5MM ENTRETOISE	1

SCHÉMA D'ENSEMBLE



R&G Racing

Unit 1, Shelley's Lane, East Worldham, Alton, Hampshire, GU34 3AQ

Tel: +44 (0)1420 89007 Fax: +44 (0)1420 87301 www.rg-racing.com Email: info@rg-racing.com



NOTICE DE MONTAGE

- Pour accéder aux boulons de montage du carter moteur, retirez le panneau inférieur côté droit de la moto :
- Retirez les boulons allen de 3 x 3 mm du dessous du pan de ventre comme indiqué sur la photo 1.
- Retirez le boulon allen de 4 mm avant de la face inférieure du pan de ventre comme indiqué sur la photo 2.
- Retirez le boulon Allen de 4 mm de l'arrière du panneau de ventre situé près du levier de frein arrière comme indiqué sur la photo 3.
- Tout en soutenant le carénage ventral, retirez les boulons Allen de 3 x 3 mm se connectant au carénage supérieur comme indiqué sur la photo 4.
- Notez la position de l'œillet en caoutchouc fixé entre les panneaux ventraux, il devra être remplacé lors de la remise en place du panneau du ventre.
- Vous pouvez maintenant accéder aux 3 boulons de moteur qui doivent être retirés comme indiqué sur la flèche sur la photo 5, retirez-les à l'aide d'une douille de 8 mm.
- Présentez la protection carter moteur sur la moto dans le bon sens.
- En vous référant au schéma d'assemblage à la page 2:
- Placez une rondelle M6 (article 2) sur chacun des boulons.
 - Placez le boulon M6 x 35 mm le plus long (article 4) dans le trou le plus reculé de la protection carter moteur (article 1).
 - Placez l'entretoise de 5 mm (article 5) sur le filetage du boulon arrière M6 X 35 mm.
 - Vissez les boulons plus courts M6 x 30 mm (article 3) dans les deux trous restants.
- Présentez l'assemblage sur le carter moteur et fixez la protection sur la moto, en vous assurant que l'entretoise repose contre le support arrière comme indiqué sur la photo 6.
- Serrez tous les boulons au couple correct à l'aide d'une clé hexagonale de 4 mm.
- Lors du remontage du carénage, assurez-vous que l'œillet en caoutchouc dans le carénage soit correctement placé entre les deux parties de carénage comme indiqué sur la photo 7.
- Vérifiez que tous les boulons soient serrés et que le carénage soit sécurisé avant de rouler.
- Vérifiez régulièrement le serrage des boulons.

ISSUE 1 11/09/2020 (DM)